

Climate-Peace Nexus: Conflict-Sensitive and Child-Centred Climate Change Adaptation in Syria and Lebanon



Nick Ireland, Director Climate Change Division, SCA

Rosaline Chemali, Climate and Environmental Technical Advisor, SCI Lebanon



PROJECT SUMMARY



Project Geographies: Lebanon (8 Governorates)



Project Duration: 6 years (2027-2033)



Funding request of GCF: \$40M



Anticipated co-financing: ~\$2.5M from Save the Children and other sources



Thematic Focus: Locally Led Adaptation; Early Warning Systems; Climate Resilient Livelihoods, Water and Food Security; Ecosystem Protection and Restoration.



GCF Result Areas: Livelihoods of people & communities, Health, food & water security, Ecosystems & ecosystem services

LEBANON'S CLIMATE CHANGE CONTEXT

- Climate change induced rainfall reductions and temperature increases is leading to more frequent droughts and water scarcity in Lebanon.
- Vulnerable groups are experiencing multi-dimensional crises, driven by prolonged conflict, economic disruption, and rising social insecurity.
- Lebanon has warmed significantly, with mean temperatures rising by nearly 2°C over the last four decades.
- Increased **evapotranspiration**, reduced **winter** precipitation combined with longer dry spells, is resulting in **growing aridity** and **more frequent drought conditions** in most of Lebanon.

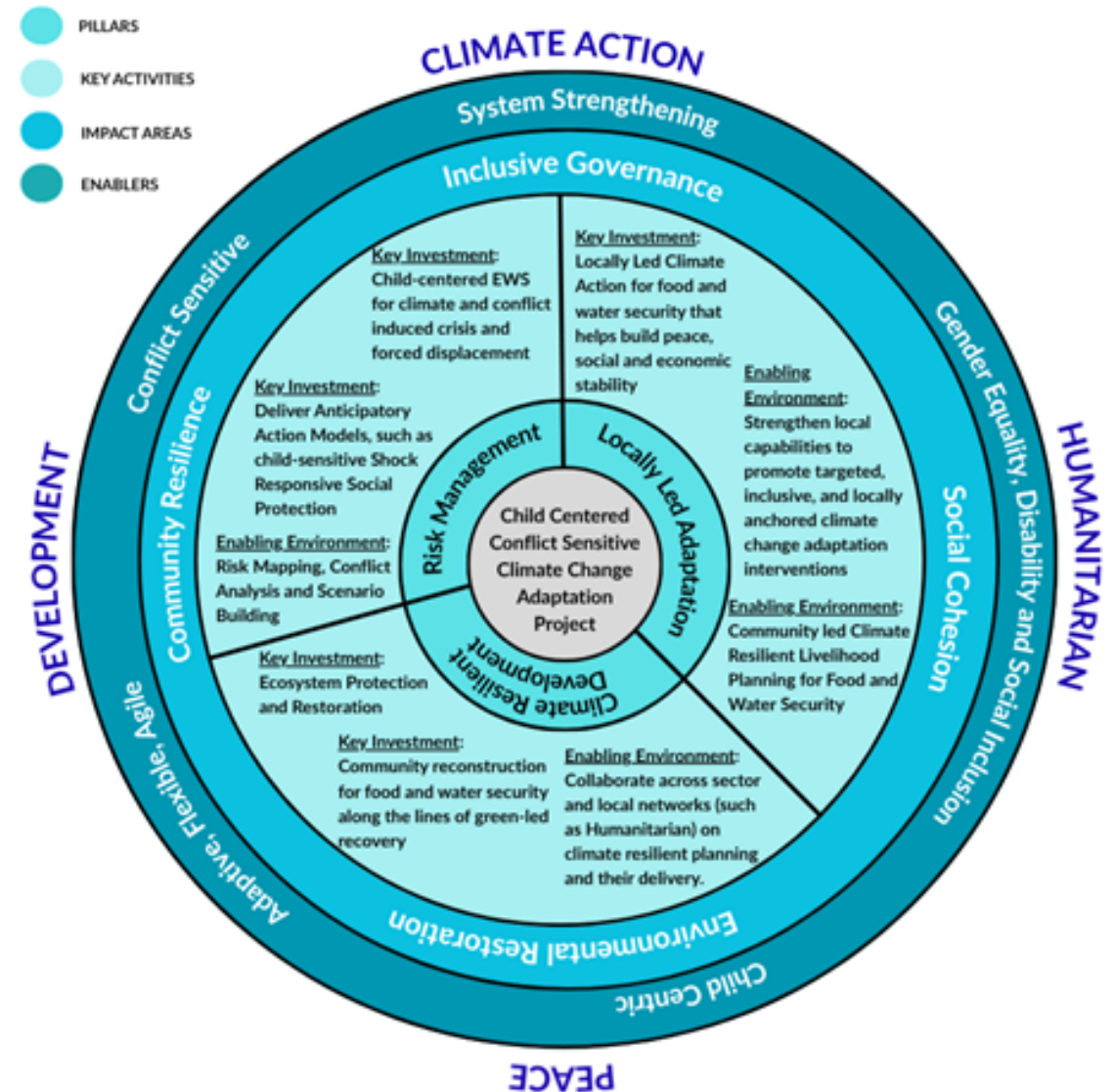


PROJECT TECHNICAL FRAMEWORK

The project will deliver activities under 3 key pillars

- 1) Risk Management;
 - 2) Locally Led Adaptation;
 - 3) Climate Resilient Development.
- Key activities under **Risk Management** and **Locally Led Adaptation** pillars will align interventions with local peacebuilding efforts to ensure promotion of stability through addressing climate risks.
 - Key activities under the **Climate Resilient Development** and **Locally Led Adaptation** pillars promote cross-sectoral collaboration among Development, DRR, Humanitarian, and Peacebuilding actors in addressing food and water climate and conflict related vulnerabilities.

Climate Change Adaptation in Fragile & Conflict Affected States
Layering interventions to build climate resilience of vulnerable communities



THEORY OF CHANGE

IF vulnerable communities in Lebanon and Syria are supported to develop and implement locally-led, child-centred conflict sensitive climate actions,

THEN their climate resilience, for children, adolescents and youth, will be strengthened,

BECAUSE they will have increased resources and ability to address climate change challenges, mitigate conflict impact, improve food and water security, and enhance livelihoods.



INDICATIVE INTERVENTIONS

- **Inclusive, child-centered Local Adaptation Plans (LAPs)** and their integration into sub-national and national development and climate action plans
- **Multi-hazard early warning systems** and integrate child and GEDSI specific measures
- **Climate resilient anticipatory social assistance interventions** linked to existing humanitarian safety nets
- **Implement nature-based solutions**, prioritizing children, adolescents and youth led initiatives aligned with LAPs, fostering peacebuilding and social cohesion
- **Strengthen community capacity to implement climate-resilient practices and technologies** for water and food security, especially targeting youth



Concept Note Consultations

- ❖ Ministry of Environment (NDA)
- ❖ Ministry of Agriculture
- ❖ Ministry of Energy and Water
- ❖ Ministry of Education and Higher Education
- ❖ Ministry of Social Affairs
- ❖ Ministry of Finances
- ❖ Head of Cooperatives (MoA)
- ❖ National Council for Scientific Research (CNRS-Lebanon)
- ❖ Consultation with Civil Society Organisations including Lebanon Red Cross, Global Health Institute, Lebanon Mountain Trail Association, Humanity and Inclusion, Jusour El Nour



Alignment with National Priorities

- ✓ NDC 3.0 *NDC 3.0 – Target year 2035.2025*
- ✓ NAP (under preparation)
- ✓ Long-term Low Emission Development Strategy for 2050 (LT-LEDS) NAS 2020–2025
- ✓ National Agriculture Strategy (NAS) 2020–2025
- ✓ National Agriculture Strategy (NAS) 2026-2035 (under preparation)
- ✓ National Biodiversity Strategy and Action Plan (NBSAP) 2016–2030
- ✓ National Water Strategy for 2024-35
- ✓ National Strategy on Greening Education - -MEHE
- ✓ Lebanon's First Biennial Transparency Report (BTR1) 2023
- ✓ Environmental Protection Law No. 444/2002 and Environmental Impact Assessment (EIA) No. 8633/2012 and Strategic Environmental Assessment (SEA) No. 8213/2012 Decrees

IMPLEMENTATION ARRANGEMENTS

Country led by the Ministry of Environment

AE: SCA

EE: SC International in Lebanon

Steering Committee (high-level oversight, political alignment and inter-ministerial coordination):

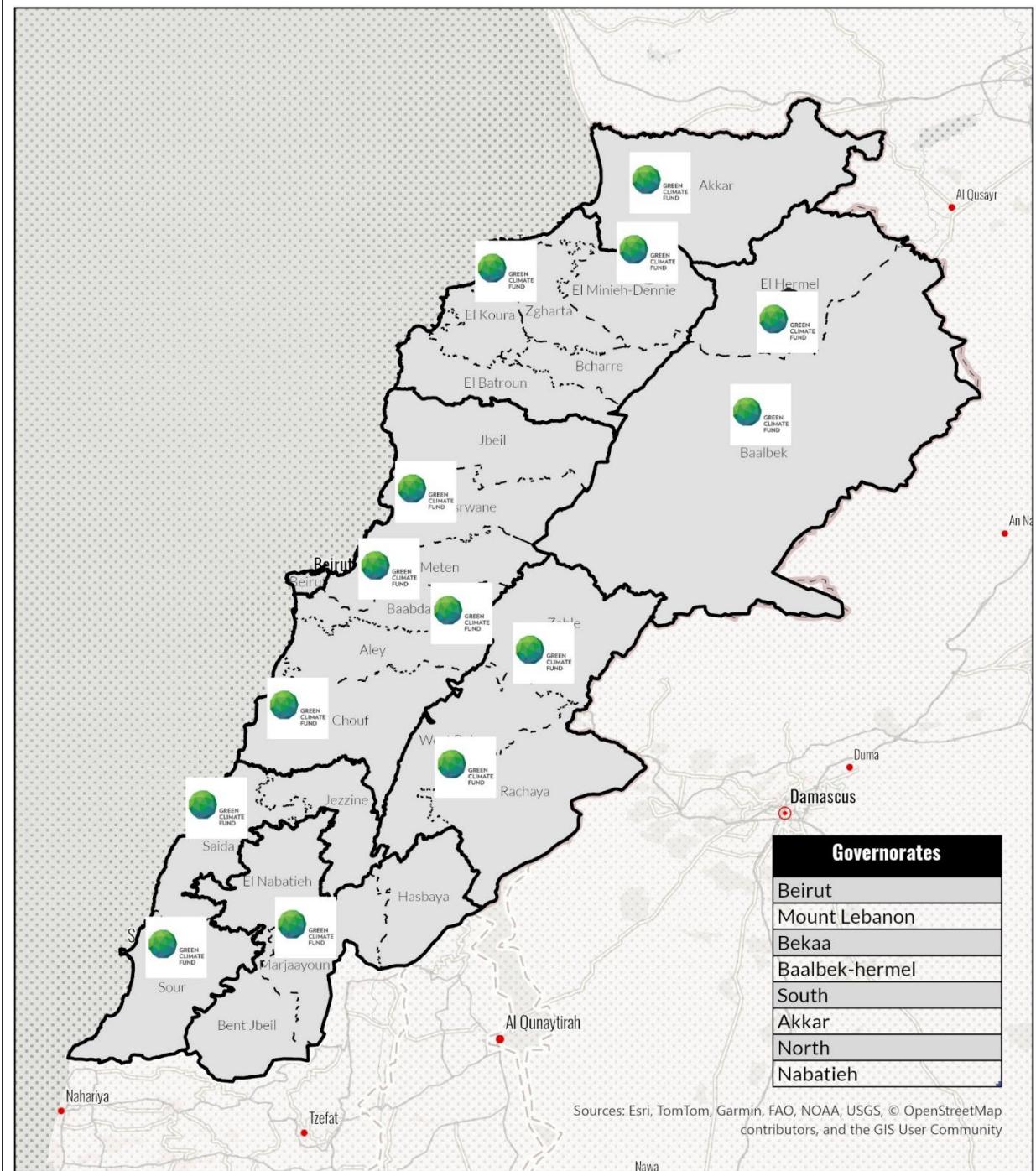
- Co-chair - Ministry of Environment
- Co-chair: SCI Lebanon
- Ministry of Agriculture, Ministry of Energy and Water; Ministry of Education and Higher Education, Ministry of Social Protection
- CNRS (Council for Scientific Research)
- Governorates

Project Implementation Unit: Day-to-day management of activities
– staff hired by project

Delivery Partners: through procurement processes



IMPLEMENTATION LOCATIONS



ADAPTATION BENEFITS



Livelihoods, Food and Water Security

Increase or no decrease in household food and water security

Increase or no decrease in agricultural productivity among smallholder farmers

Increased self-employment or employment of young people in climate-resilient or green jobs



Early Warning Systems

Increase in access to reliable and timely climate information and early warnings

Access to people-centered early warning systems, underpinned by inclusive and participatory approaches

Enhanced capacity for shock responsive social protection



Ecosystems

Increase in natural resources areas brought under climate-resilient management practices

| Beneficiaries | Direct | Indirect | Total Reach |
|---------------|-------------------------|----------------------------|-------------|
| Lebanon | 370,000 (6% population) | 1,850,000 (31% population) | 2,220,000 |

Financial Structure

| SOURCES OF FUNDS | | | USES OF FUNDS | |
|-------------------------------------|----------------------|--------------|--------------------|--------------|
| Name of Institutions | Financial Instrument | Amount (USD) | Use of Funds | Amount (USD) |
| GCF | Grants | 40,000,000 | Output 1.1 | 5,100,212 |
| Save the Children and Other Sources | Grants / In-Kind | 2,500,000 | Output 2.1 | 8,195,933 |
| | | | Output 3.1 | 15,221,019 |
| | | | Output 3.2 | 8,195,933 |
| | | | MEAL | 1,835,655 |
| | | | Contingency Costs | 1,927,438 |
| | | | Project Management | 2,023,810 |
| Total Sources: | | 42,500,000 | Total Uses: | 42,500,000 |

**Thank you
&
Discussion**